
Date:	12-Apr-18	Distribution:
Project:	MSB Air Distribution	Steven Bennet (UTH)
Project No.:	217-048	Heather Camden (E&C)
Addendum No.:	One (1)	

Notice to All Bidders

This Addendum forms a part of the Contract Documents and modifies the original Drawings, issued 26 February 2018, to the extent noted hereinafter.

All parties of interest shall take careful note of this Addendum so that proper allowance is made in all computations, estimates and contracts and so that all trades affected are fully advised in the performance of work that will be required by them.

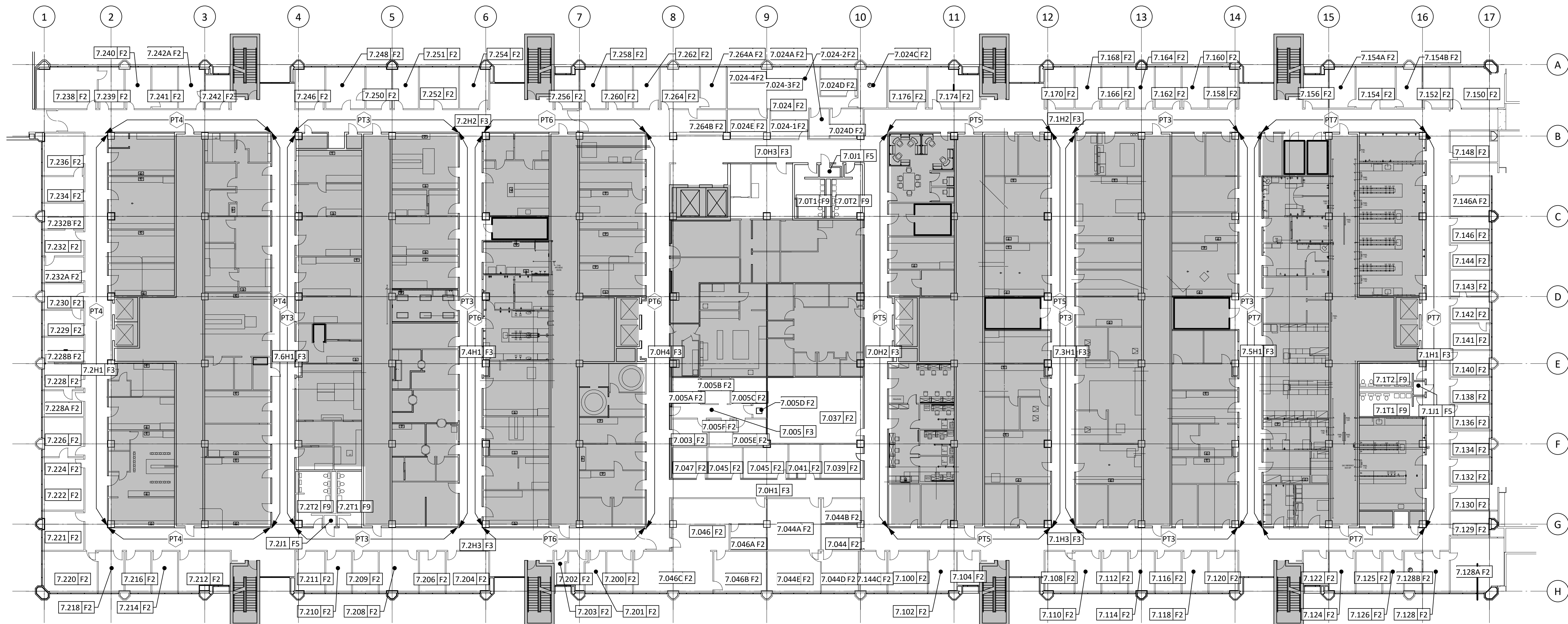
This Addendum supersedes all previous Drawings, Specifications, and instructions pertaining to these items.

A. Drawings

Item 01.01 The following listed drawings, dated 12 April 2018 are being issued as part of Addendum No. 1 as REVISED:

- A-141 Finish Plan and Schedule
- A-163A Reflected Ceiling Plan - Level 5 Area A - New
- A-163B Reflected Ceiling Plan - Level 5 Area B - New
- A-163C Reflected Ceiling Plan - Level 5 Area C - New
- A-163D Reflected Ceiling Plan - Level 5 Area D - New
- A-163E Reflected Ceiling Plan - Level 5 Area E - New
- A-163F Reflected Ceiling Plan - Level 5 Area F - New
- A-164A Reflected Ceiling Plan - Level 7 Area A - New
- A-164B Reflected Ceiling Plan - Level 7 Area B - New
- A-164C Reflected Ceiling Plan - Level 7 Area C - New
- A-164D Reflected Ceiling Plan - Level 7 Area D - New
- A-164E Reflected Ceiling Plan - Level 7 Area E - New
- A-165F Reflected Ceiling Plan - Level 7 Area F - New

End of Addendum No. 1



Legend - Finish Plan
 [Grey Box] Not in Project Scope

Overall Finish Plan - Level 7 1" = 20'-0" 1

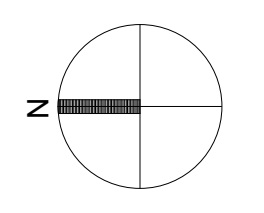
Type Mark	Description	Manufacturer	Pattern/Line	Color	Notes
Floors					
CPT1	Carpet	Interface Flooring	Furrows II	9214 Georgia Clay	
VCT1	Vinyl composition tile	Armstrong	Imperial Texture	51810 Washed Linen	2
Base					
RBC	Rubber base, cove	Roppe		P193 Black/Brown	3
RBS	Rubber base, straight	Roppe		114 Lunar Dust	
Walls					
PT1	Paint	Sherwin Williams	Semi-gloss	SW 7043 Worldly Gray	
PT2	Paint	Sherwin Williams	Semi-gloss	SW 7012 Creamy	
PT3	Paint	Sherwin Williams	Semi-gloss	SW 1095 UT Off-White	
PT4	Paint	Sherwin Williams	Semi-gloss	SW 6356 Copper Mountain	
PT5	Paint	Sherwin Williams	Semi-gloss	SW 6423 Rye Grass	
PT6	Paint	Sherwin Williams	Semi-gloss	SW 6380 Humble Gold	
PT7	Paint	Sherwin Williams	Semi-gloss	SW 6242 Bracing Blue	
PT8	Paint	Match Existing	-	-	
Ceilings					
ACT1	Acoustical ceiling tile	Armstrong	Fine Fissured	1732	
ACT2	Acoustical ceiling tile	Armstrong	PRELUDE XL 15/16" Exposed Tee		
Doors					
FPT1	Paint (frame)	Sherwin Williams	Semi-gloss	SW 7031 Mega Greige	1

Notes to Schedule:
 1. Provide alternate pricing for painting all existing door frames.
 2. Provide alternate pricing to install new VCT in corridors.
 3. To be provided at all locations where CPT1 is scheduled.

Finish Type Mark	Floor	Base	Wall	Ceiling	Notes
F2	CPT1	RBC	PT1	ACT1, ACT2	1
F3	VCT1	RBC	PT3, PT4, PT5, PT6, PT7	ACT1, ACT2	4
F9	-	-	-	ACT1	3

Notes to Schedule:
 1. Remove existing flooring and base. Prepare slab for new floor installation.
 2. Existing finishes in Housekeeping rooms to remain.
 3. Existing Men's and Women's toilet-rooms floor and wall finishes to remain.
 4. Corridors field paint color to be PT3. See finish plan for accent paint colors. Existing flooring to remain where possible, replace damaged flooring tile as required.

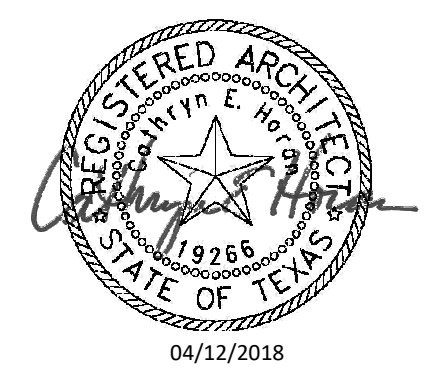
General Notes:
 1. See MEP drawings for additional scope.
 2. Existing Elevator Door frames are to be painted FPT1, and existing elevator doors to be painted color of the corridor they serve, see finish plan for colors.
 3. Verify with owner extent of demolition activities.
 4. Verify with owner installation of wall mounted accessories, tack boards, signage, etc.
 5. Provide alternate pricing for removing existing and relacing all miniblinds. Contractor to verify size.
 6. Level 7 Signage to be remain, protect during demolition and construction activities.
 7. Level 5 Signage to be provided by contractor throughout project area including chase doors, excluding stair doors. Mounting heights to match Level 6, coordinate signage locations with owner prior to installation. Vendor to install.
 Vendor info: Signarama
 12919 Southwest Freeway Suite 150
 Houston, Texas 77477



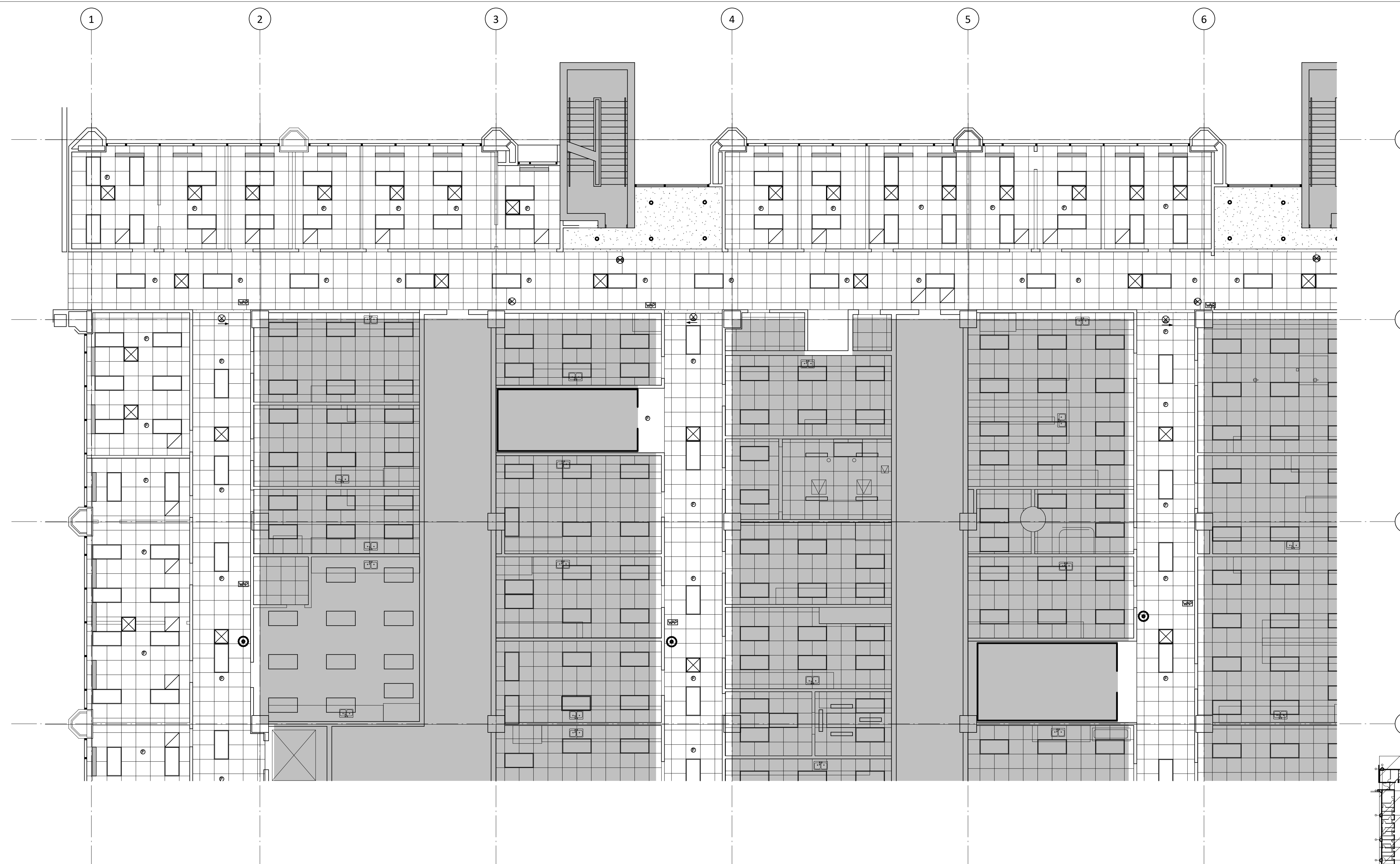
E&C
 Engineers & Consultants Inc.
 TX Firm Registration No: F-003068
 1010 Lamar, Suite 650
 Houston, Texas 77002
 Tel 713/580-8800
 Fax 713/580-8888
 www.eceng.com

Philo Wilke
 Partnership
 11275 S. Sam Houston Parkway W.
 Suite 200
 Houston, Texas 77031
 832.554.1130 phone
 832.554.1131 fax
 www.pwarch.com

UTHSC
MSB OFFICE AIR DISTRIBUTION-5TH & 7TH FLOORS
 E&C PROJECT # 3300.01

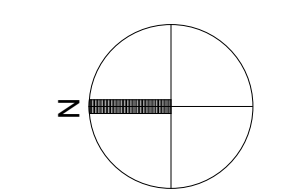
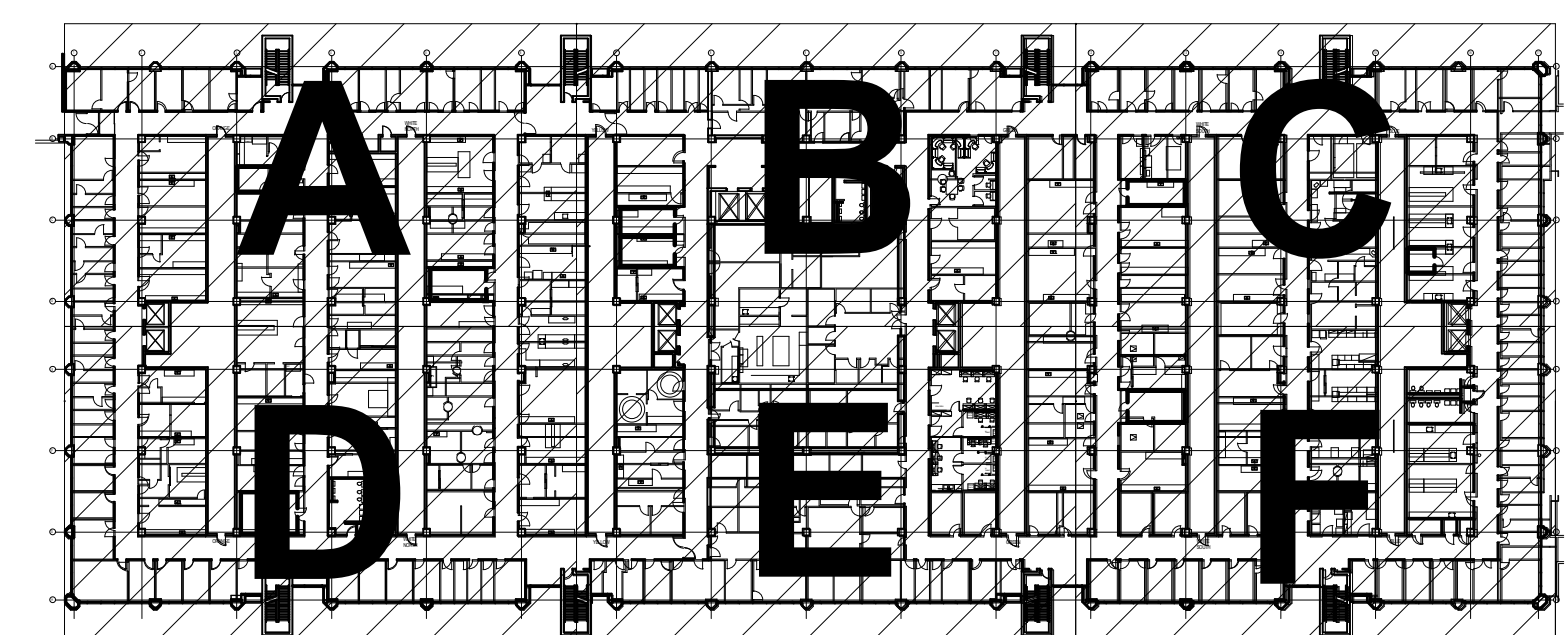


DRAWING: A-141
REVISION: ADDENDUM #1
SCALE:
DATE: 04-12-2018



- General Notes - Reflected Ceiling Plan**
- All new ceilings to be 2' x 2' lay-in acoustical ceiling tile at 9'-0" a.f.f., unless noted otherwise. See Finish Schedule for types.
 - Center all down-lights, sprinkler heads, and wall washers in center of ceiling tile, unless noted otherwise.

- Legend - Reflected Ceiling Plan**
- New partition to structure. See 1 A-520 for partition schedule.
 - Existing Ceiling Mounted Fire Alarm Visual Strobe
 - Existing Fire Sprinkler
 - Existing Wireless Access Point
 - Ceiling mounted Exit Sign
 - Existing Ceiling Mounted Emergency Shower Head
 - Not in project Scope
 - Existing to be removed

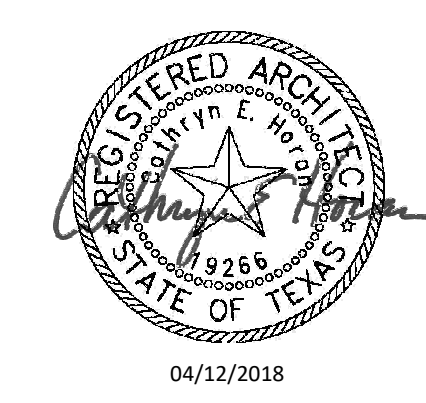


Reflected Ceiling Plan - Level 5 Area A - New 1/8" = 1'-0" **1**

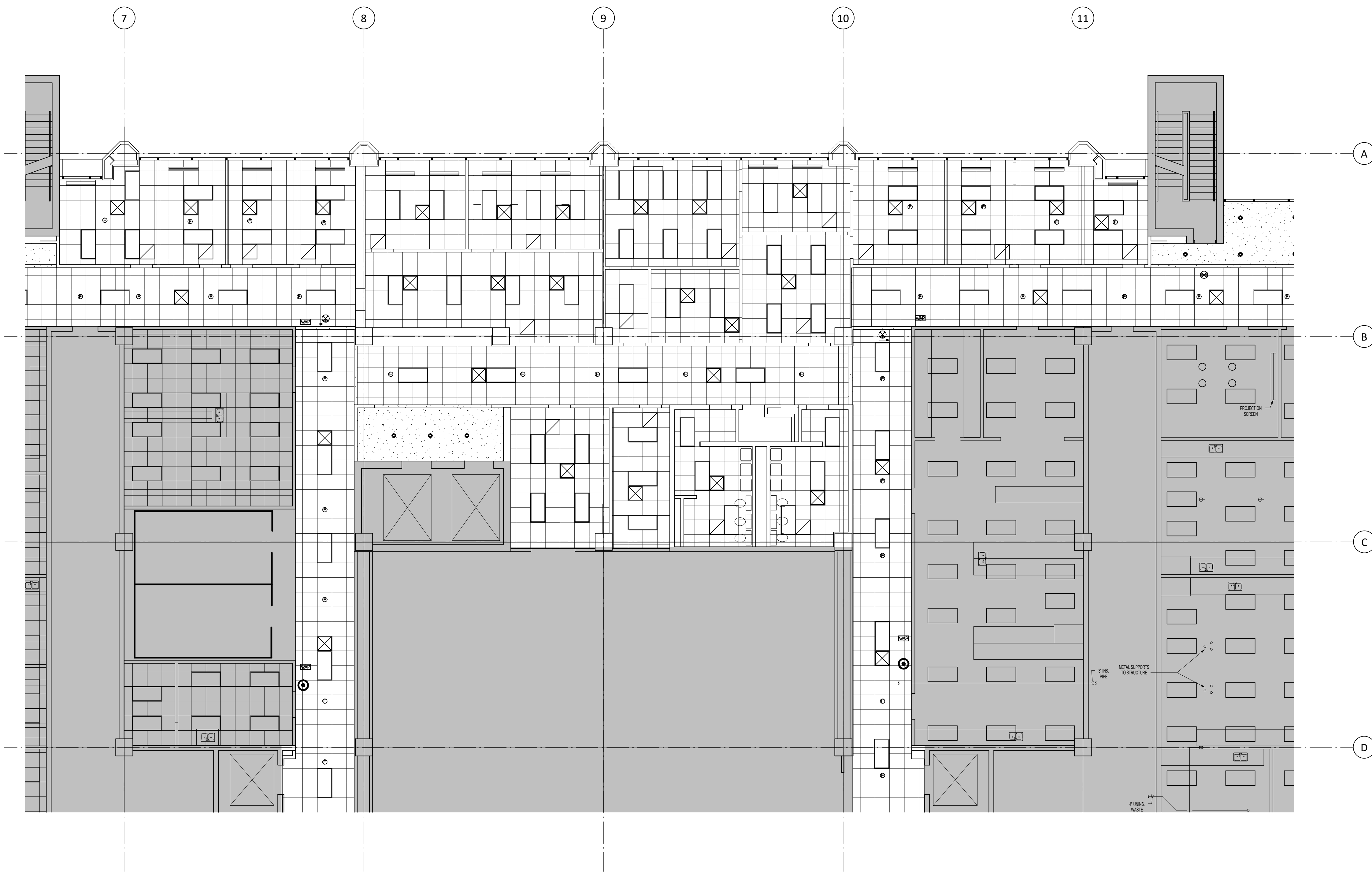
E&C
 Engineers & Consultants Inc.
 TX Firm Registration No: F-003068
 1010 Lamar, Suite 650
 Houston, Texas 77002
 Tel 713/580-8800
 Fax 713/580-8888
 www.eceng.com

Philo Wilke
 Partnership
 11275 S. Sam Houston Parkway W.
 Suite 200
 Houston, Texas 77031
 832.554.1130 phone
 832.554.1131 fax
 www.pwarch.com

UTHSC
MSB OFFICE AIR DISTRIBUTION-5TH & 7TH FLOORS
 E&C PROJECT # 3300.01

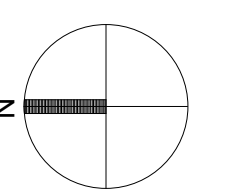
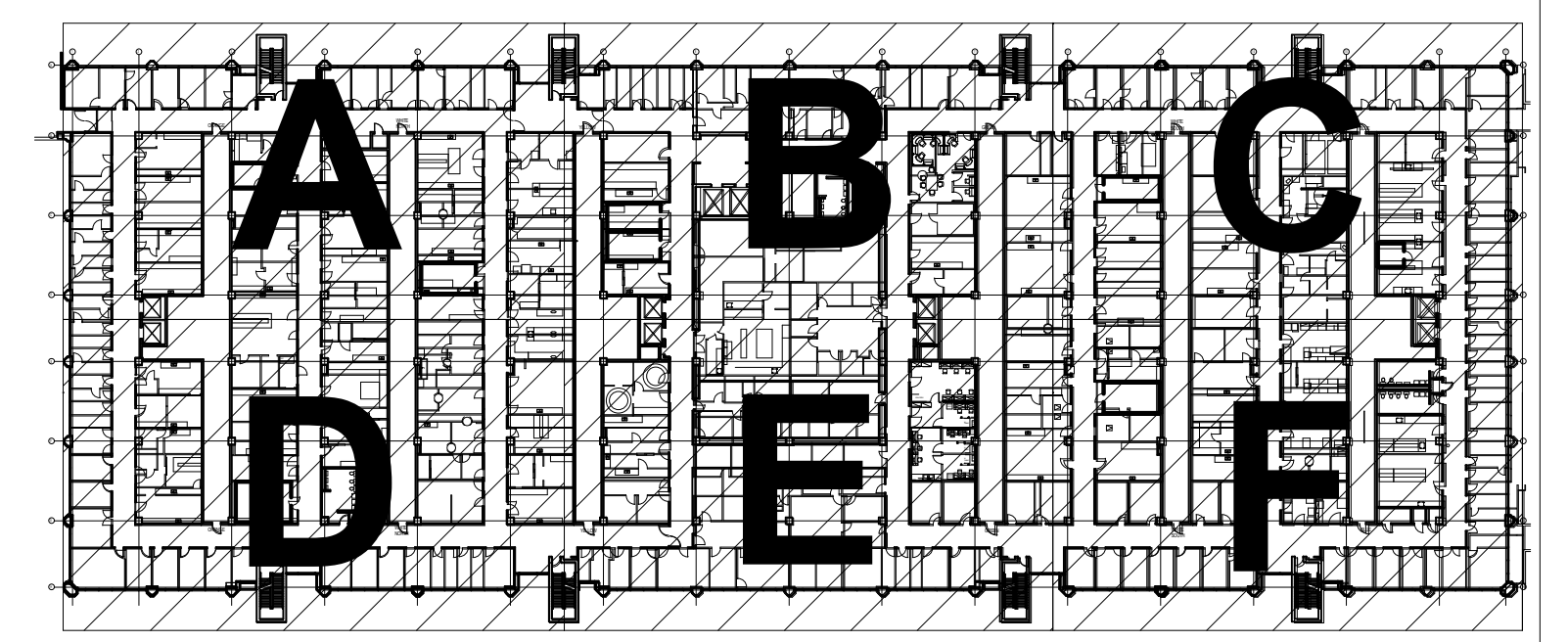


DRAWING: A-163A
REVISION: ADDENDUM #1
SCALE:
DATE: 04-12-2018



- General Notes - Reflected Ceiling Plan**
- All new ceilings to be 2' x 2' lay-in acoustical ceiling tile at 9'-0" a.f.f., unless noted otherwise. See Finish Schedule for types.
 - Center all down-lights, sprinkler heads, and wall washers in center of ceiling tile, unless noted otherwise.

- Legend - Reflected Ceiling Plan**
- New partition to structure. See 1 A-520 for partition schedule.
 - Existing Ceiling Mounted Fire Alarm Visual Strobe
 - Existing Fire Sprinkler
 - Existing Wireless Access Point
 - Ceiling mounted Exit Sign
 - Existing Ceiling Mounted Emergency Shower Head
 - Not in project Scope
 - Existing to be removed



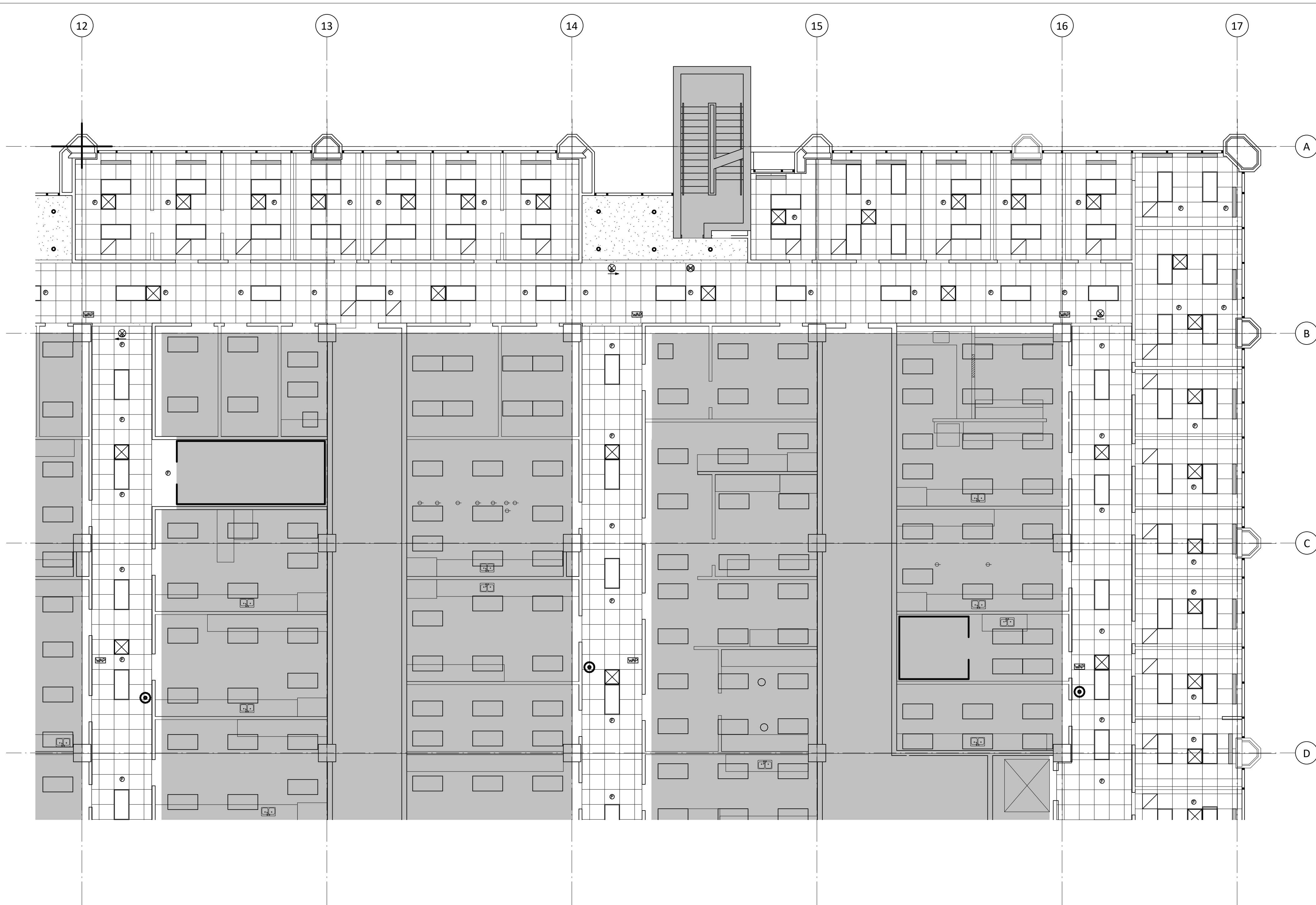
E&C
 Engineers & Consultants Inc.
 TX Firm Registration No: F-003068
 1010 Lamar, Suite 650
 Houston, Texas 77002
 Tel 713/580-8800
 Fax 713/580-8888
 www.eceng.com

Philo Wilke
 Partnership
 11275 S. Sam Houston Parkway W.
 Suite 200
 Houston, Texas 77031
 832.554.1130 phone
 832.554.1131 fax
 www.pwarch.com

UTHSC
MSB OFFICE AIR DISTRIBUTION-5TH & 7TH FLOORS
 E&C PROJECT # 3300.01

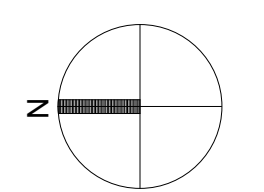
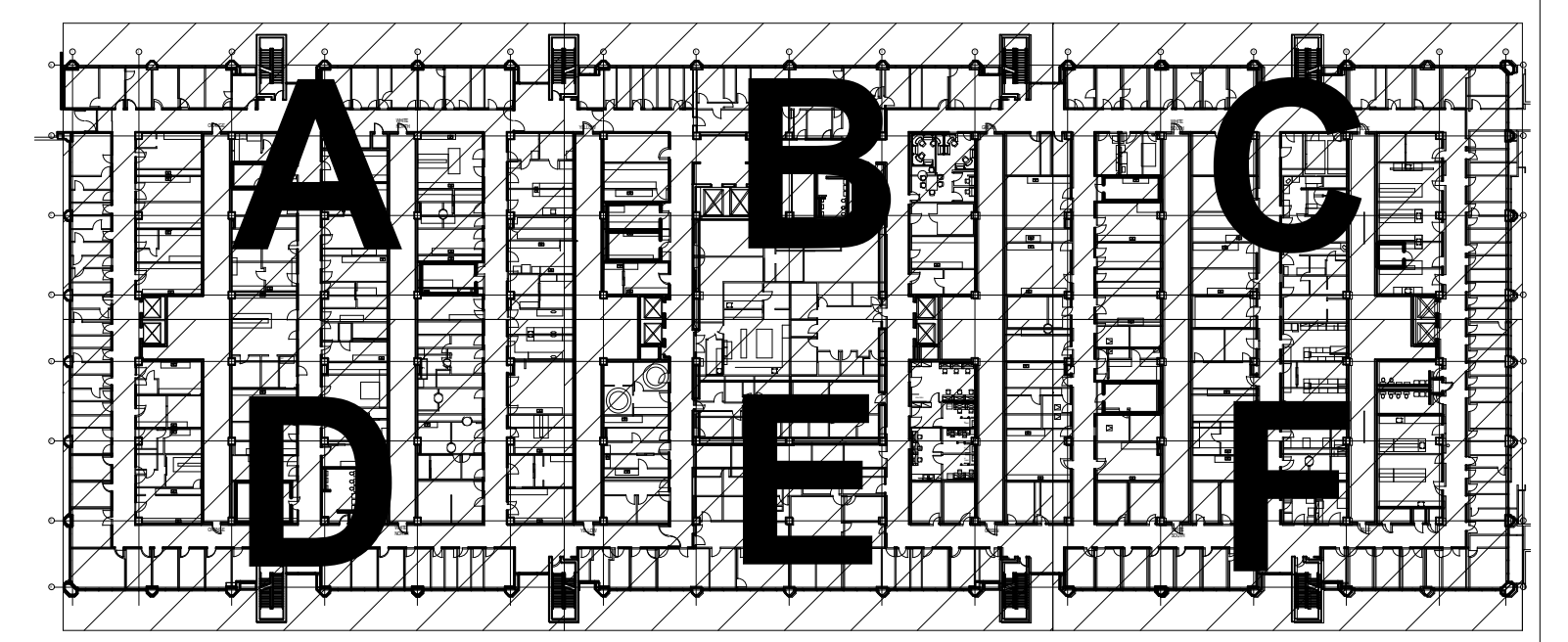


DRAWING: A-163B
REVISION: ADDENDUM #1
SCALE:
DATE: 04-12-2018



- General Notes - Reflected Ceiling Plan**
- All new ceilings to be 2' x 2' lay-in acoustical ceiling tile at 9'-0" a.f.f., unless noted otherwise. See Finish Schedule for types.
 - Center all down-lights, sprinkler heads, and wall washers in center of ceiling tile, unless noted otherwise.

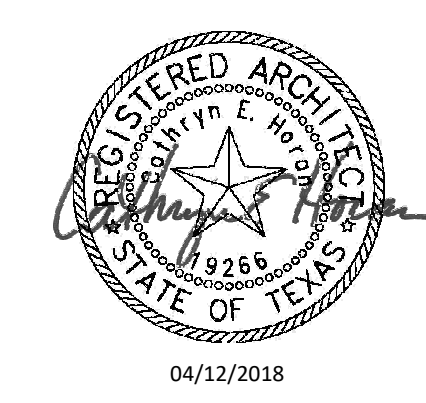
- Legend - Reflected Ceiling Plan**
- New partition to structure. See 1 A-520 for partition schedule.
 - Existing Ceiling Mounted Fire Alarm Visual Strobe
 - Existing Fire Sprinkler
 - Existing Wireless Access Point
 - Ceiling mounted Exit Sign
 - Existing Ceiling Mounted Emergency Shower Head
 - Not in project Scope
 - Existing to be removed



UTHSC
MSB OFFICE AIR DISTRIBUTION-5TH & 7TH FLOORS
 E&C PROJECT # 3300.01

E&C
 Engineers & Consultants Inc.
 TX Firm Registration No: F-003068
 1010 Lamar, Suite 650
 Houston, Texas 77002
 Tel 713/580-8800
 Fax 713/580-8888
 www.eceng.com

Philo Wilke
 Partnership
 11275 S. Sam Houston Parkway W.
 Suite 200
 Houston, Texas 77031
 832.554.1130 phone
 832.554.1131 fax
 www.pwarch.com



DRAWING: A-163C
REVISION: ADDENDUM #1
SCALE:
DATE: 04-12-2018

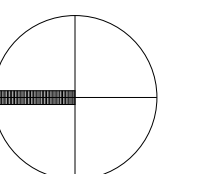
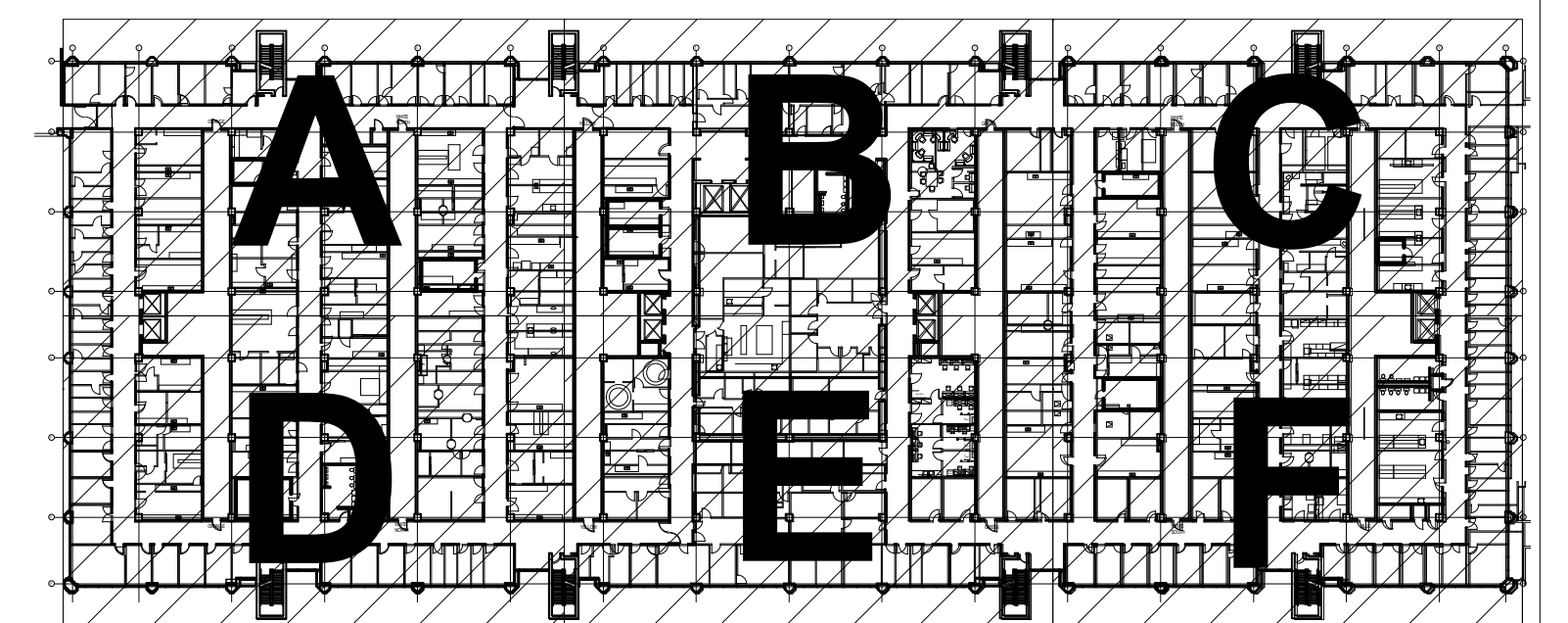


General Notes - Reflected Ceiling Plan

- All new ceilings to be 2' x 2' lay-in acoustical ceiling tile at 9'-0" a.f.f., unless noted otherwise. See Finish Schedule for types.
- Center all down-lights, sprinkler heads, and wall washers in center of ceiling tile, unless noted otherwise.

Legend - Reflected Ceiling Plan

- New partition to structure. See 1 A-520 for partition schedule.
- Existing Ceiling Mounted Fire Alarm Visual Strobe
- Existing Fire Sprinkler
- Existing Wireless Access Point
- Ceiling mounted Exit Sign
- Existing Ceiling Mounted Emergency Shower Head
- Not in project Scope
- Existing to be removed



Reflected Ceiling Plan - Level 5 Area D - New

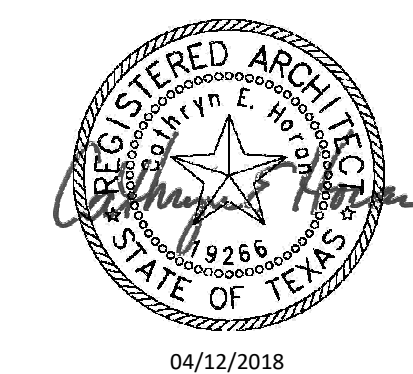
1/8" = 1'-0" 1

E&C
 Engineers & Consultants Inc.
 TX Firm Registration No: F-003068
 1010 Lamar, Suite 650
 Houston, Texas 77002
 Tel 713/580-8800
 Fax 713/580-8888
 www.eceng.com

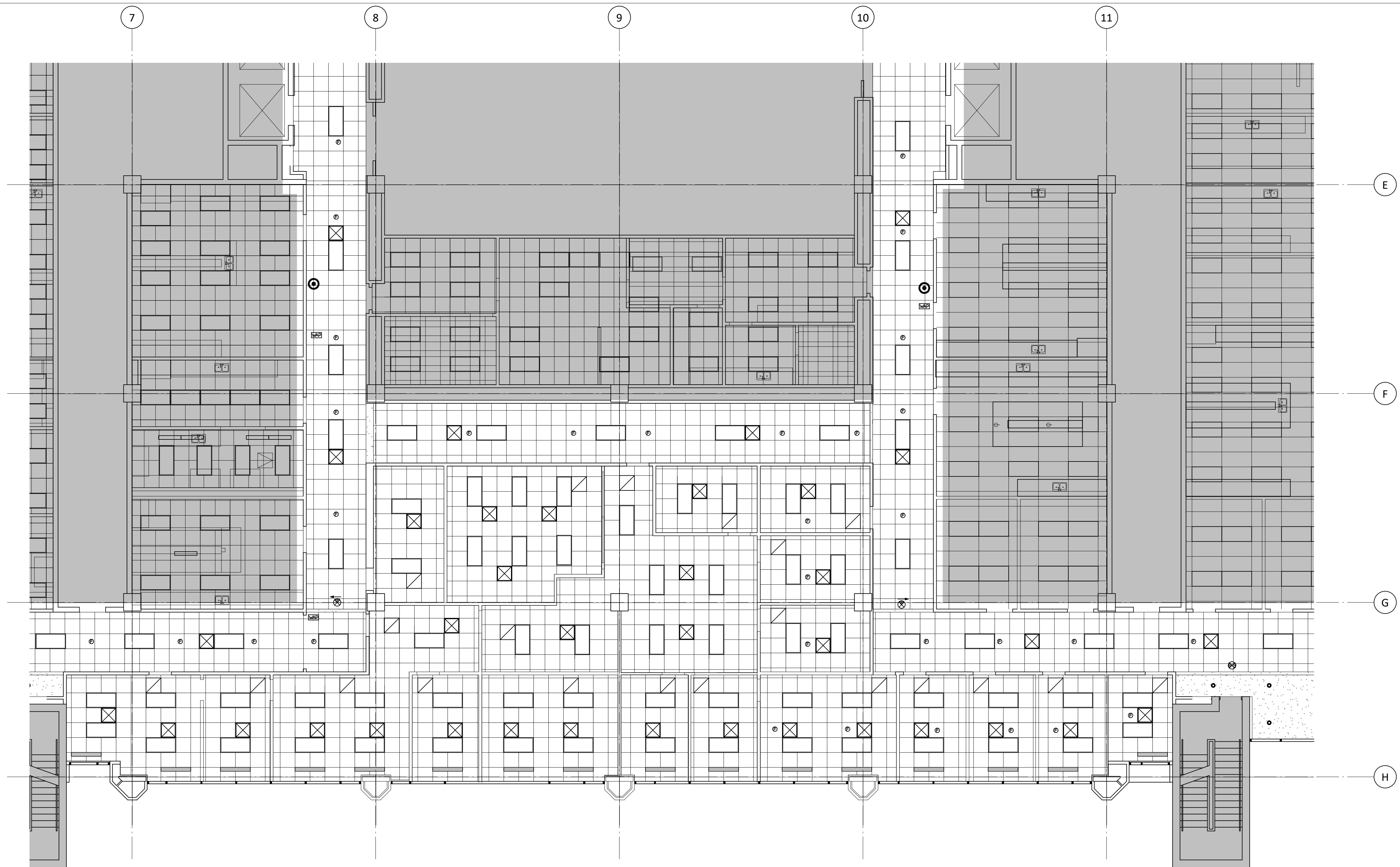
Philo Wilke
 Partnership
 11275 S. Sam Houston Parkway W.
 Suite 200
 Houston, Texas 77031
 832.554.1130 phone
 832.554.1131 fax
 www.pwarch.com

UTHSC
MSB OFFICE AIR DISTRIBUTION-5TH & 7TH FLOORS

E&C PROJECT # 3300.01



DRAWING: A-163D
REVISION: ADDENDUM #1
SCALE:
DATE: 04-12-2018

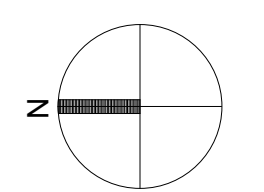
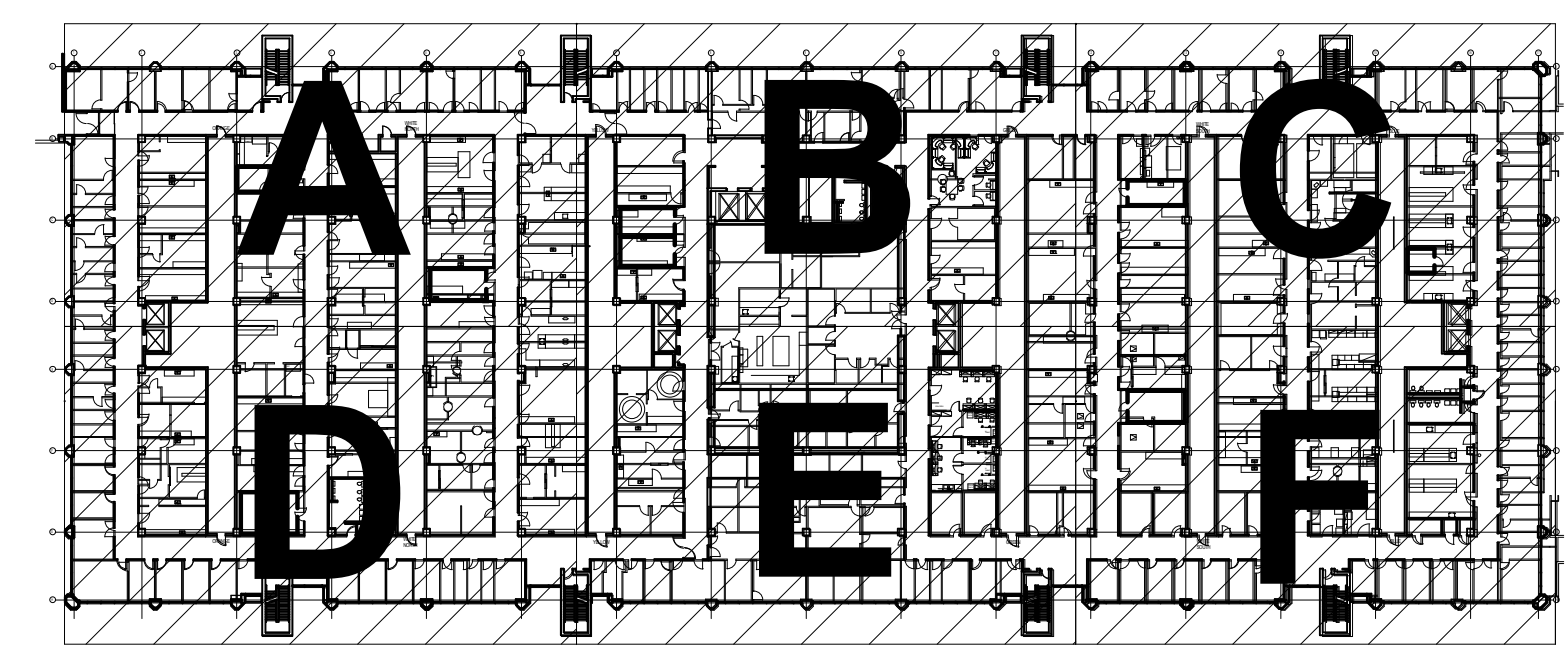


General Notes - Reflected Ceiling Plan

1. All new ceilings to be 2' x 2' lay-in acoustical ceiling tile at 9'-0" a.f.f., unless noted otherwise. See Finish Schedule for types.
2. Center all down-lights, sprinkler heads, and wall washers in center of ceiling tile, unless noted otherwise.

Legend - Reflected Ceiling Plan

- New partition to structure. See 1 A-520 for partition schedule.
- Existing Ceiling Mounted Fire Alarm Visual Strobe
- Existing Fire Sprinkler
- Existing Wireless Access Point
- Ceiling mounted Exit Sign
- Existing Ceiling Mounted Emergency Shower Head
- Not in project Scope
- Existing to be removed



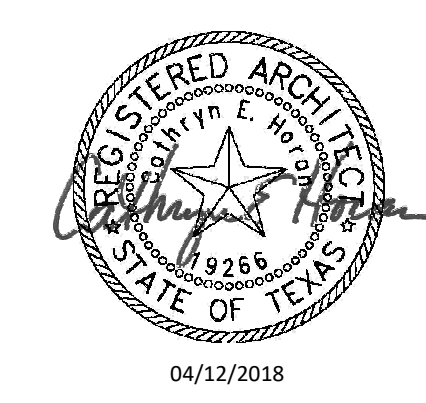
Reflected Ceiling Plan - Level 5 Area E - New

1/8" = 1'-0" 1

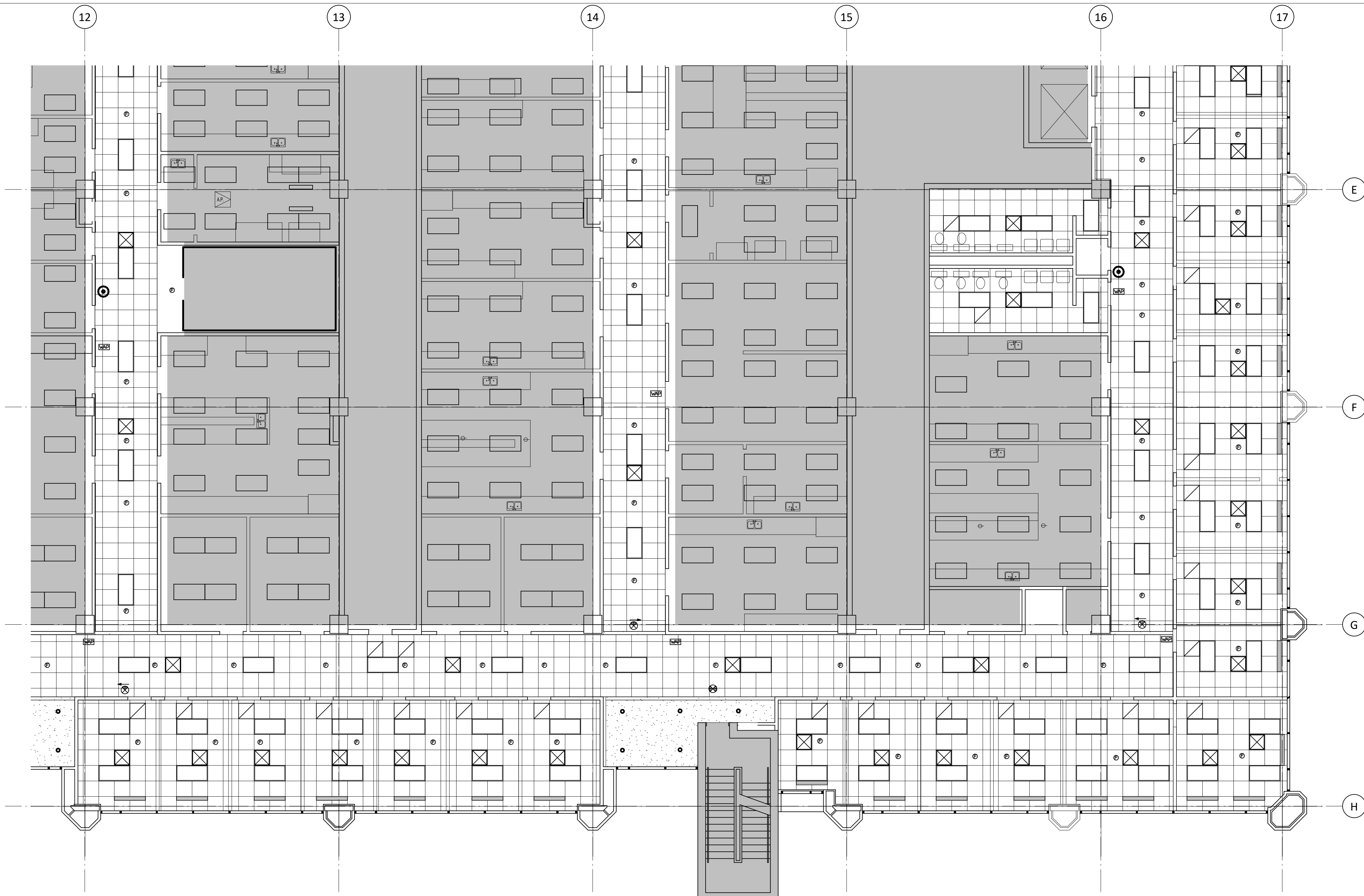
E&C
 Engineers & Consultants Inc.
 TX Firm Registration No: F-003068
 1010 Lamar, Suite 650
 Houston, Texas 77002
 Tel 713/580-8800
 Fax 713/580-8888
 www.eceng.com

Philo Wilke
 Partnership
 11275 S. Sam Houston Parkway W.
 Suite 200
 Houston, Texas 77031
 832.554.1130 phone
 832.554.1131 fax
 www.pwarch.com

UTHSC
MSB OFFICE AIR DISTRIBUTION-5TH & 7TH FLOORS
 E&C PROJECT # 3300.01



DRAWING: A-163E
REVISION: ADDENDUM #1
SCALE:
DATE: 04-12-2018

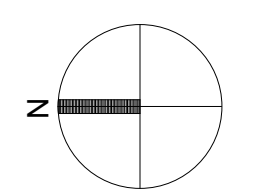
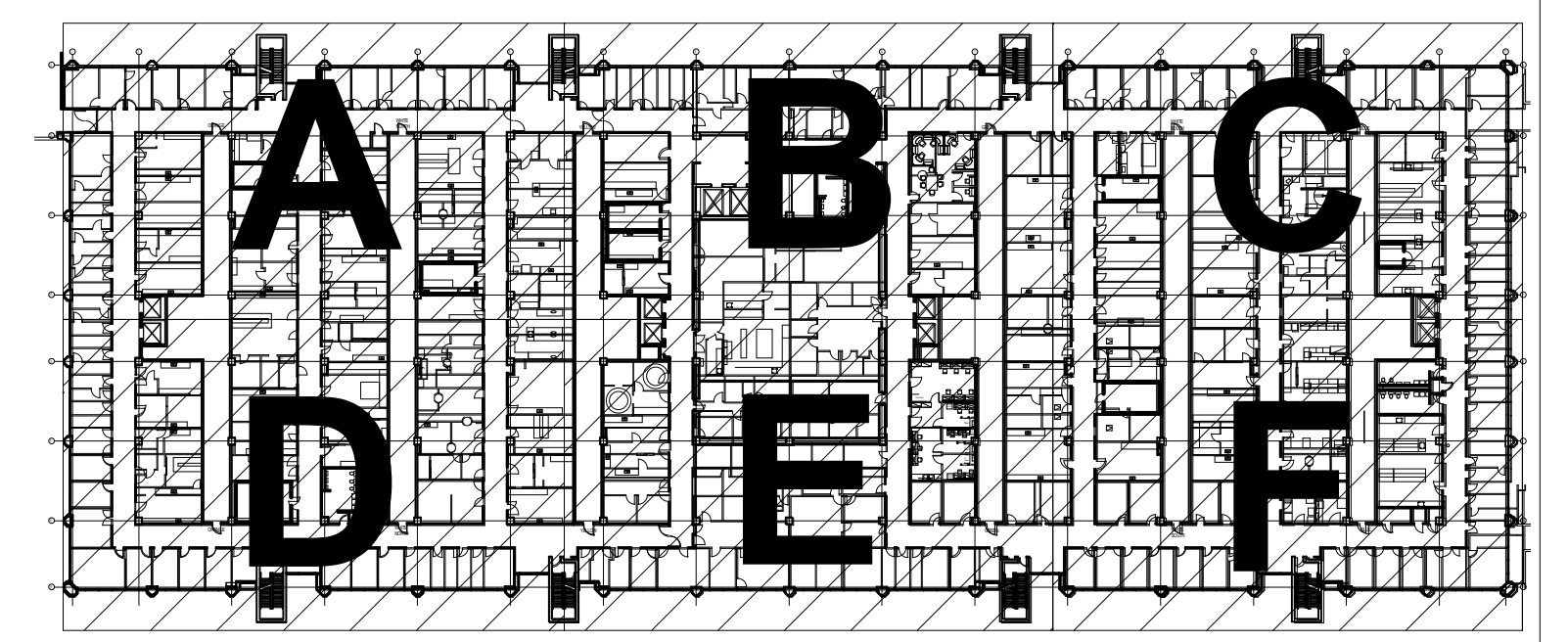


General Notes - Reflected Ceiling Plan

1. All new ceilings to be 2' x 2' lay-in acoustical ceiling tile at 9'-0" a.f.f., unless noted otherwise. See Finish Schedule for types.
2. Center all down-lights, sprinkler heads, and wall washers in center of ceiling tile, unless noted otherwise.

Legend - Reflected Ceiling Plan

- New partition to structure. See 1 A-520 for partition schedule.
- Existing Ceiling Mounted Fire Alarm Visual Strobe
- Existing Fire Sprinkler
- Existing Wireless Access Point
- Ceiling mounted Exit Sign
- Existing Ceiling Mounted Emergency Shower Head
- Not in project Scope
- Existing to be removed



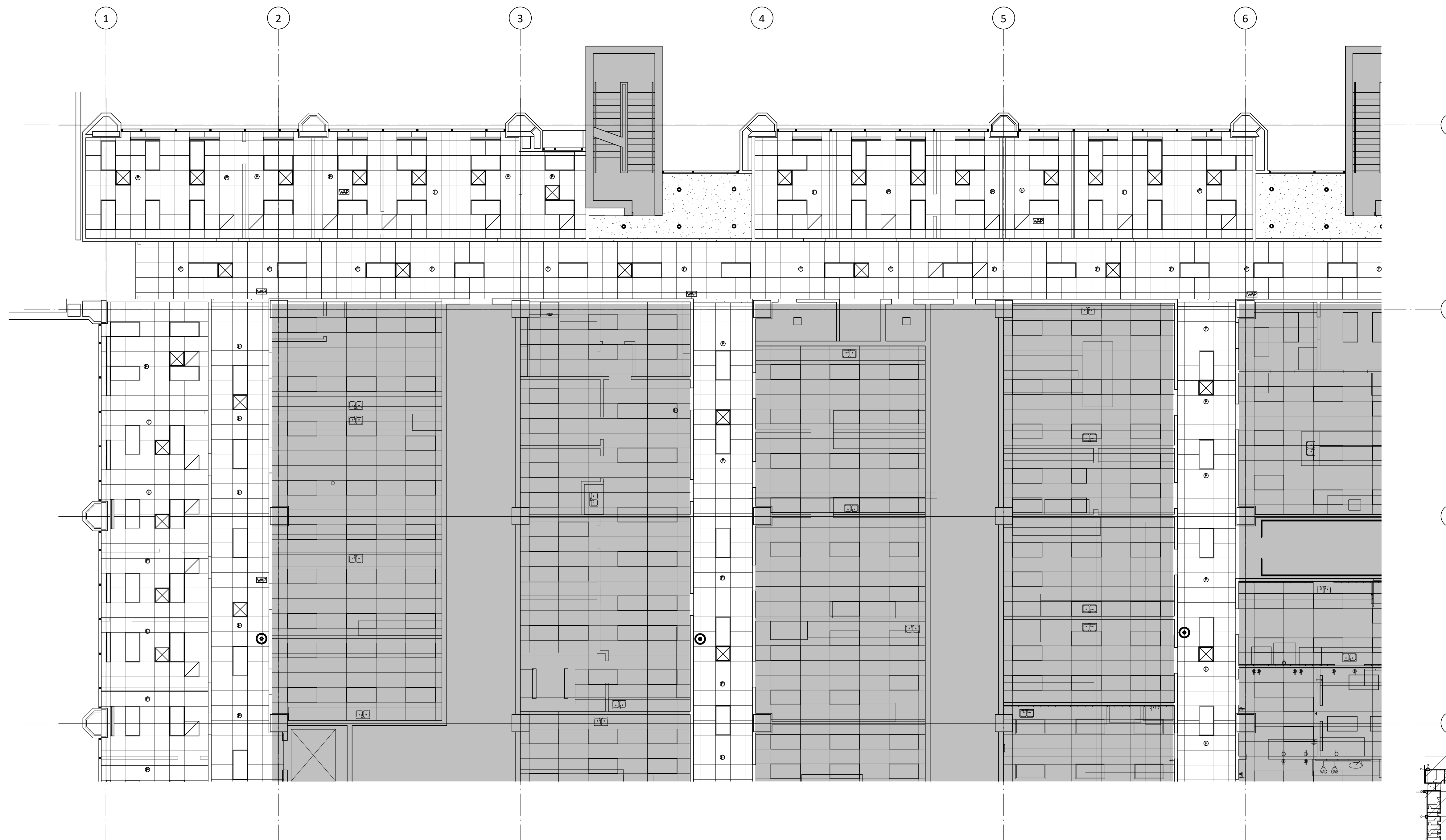
UTHSC
MSB OFFICE AIR DISTRIBUTION-5TH & 7TH FLOORS
 E&C PROJECT # 3300.01

E&C
 Engineers & Consultants Inc.
 TX Firm Registration No: F-003068
 1010 Lamar, Suite 650
 Houston, Texas 77002
 Tel 713/580-8800
 Fax 713/580-8888
 www.eceng.com

Philo Wilke
 Partnership
 11275 S. Sam Houston Parkway W.
 Suite 200
 Houston, Texas 77031
 832.554.1130 phone
 832.554.1131 fax
 www.pwarch.com



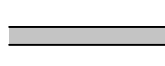
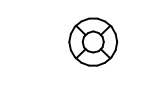





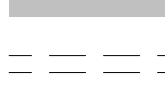
DRAWING: A-163F
REVISION: ADDENDUM #1
SCALE:
DATE: 04-12-2018

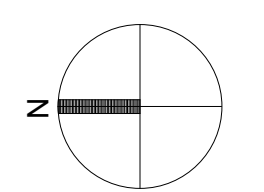
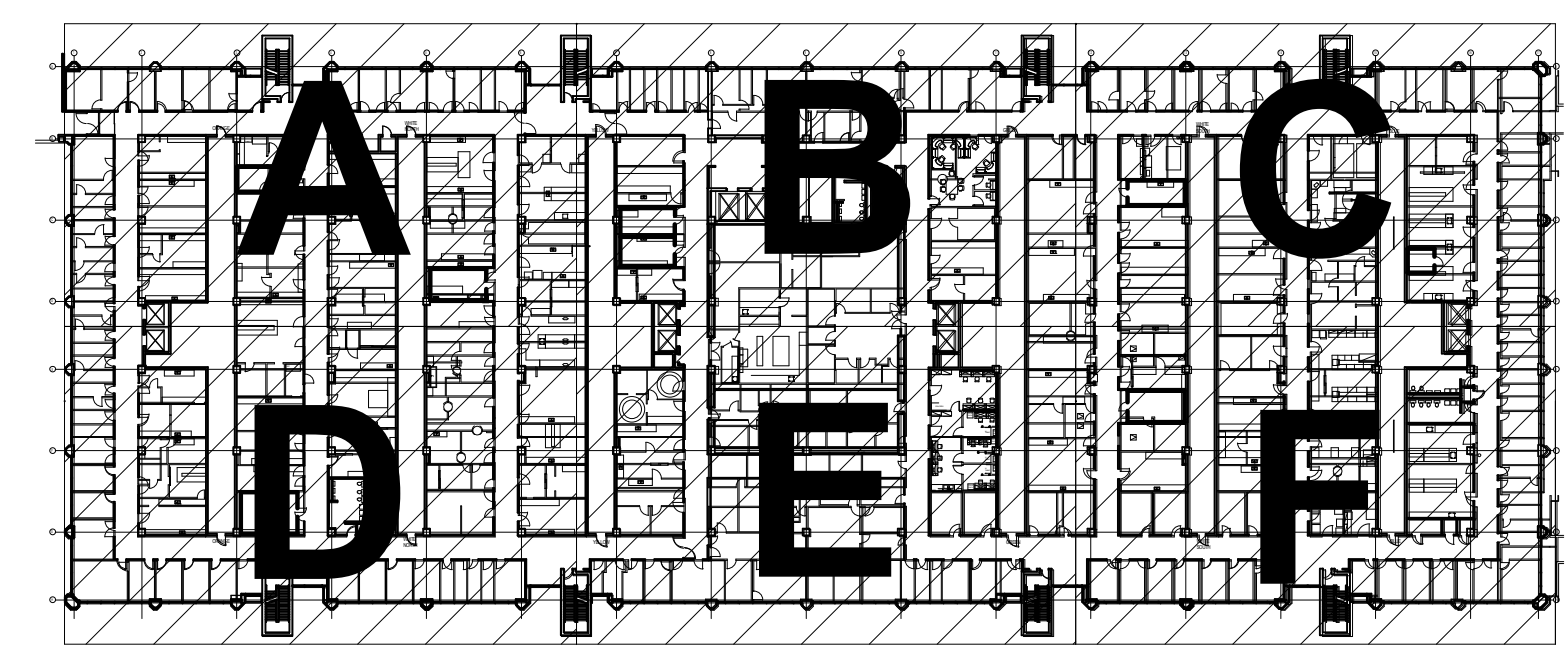


General Notes - Reflected Ceiling Plan

- All new ceilings to be 2' x 2' lay-in acoustical ceiling tile at 9'-0" a.f.f., unless noted otherwise. See Finish Schedule for types.
- Center all down-lights, sprinkler heads, and wall washers in center of ceiling tile, unless noted otherwise.

Legend - Reflected Ceiling Plan

-  New partition to structure. See 1 A-520 for partition schedule.
-  Existing Ceiling Mounted Fire Alarm Visual Strobe
-  Existing Fire Sprinkler
-  Existing Wireless Access Point
-  Ceiling mounted Exit Sign
-  Existing Ceiling Mounted Emergency Shower Head
-  Not in project Scope
-  Existing to be removed



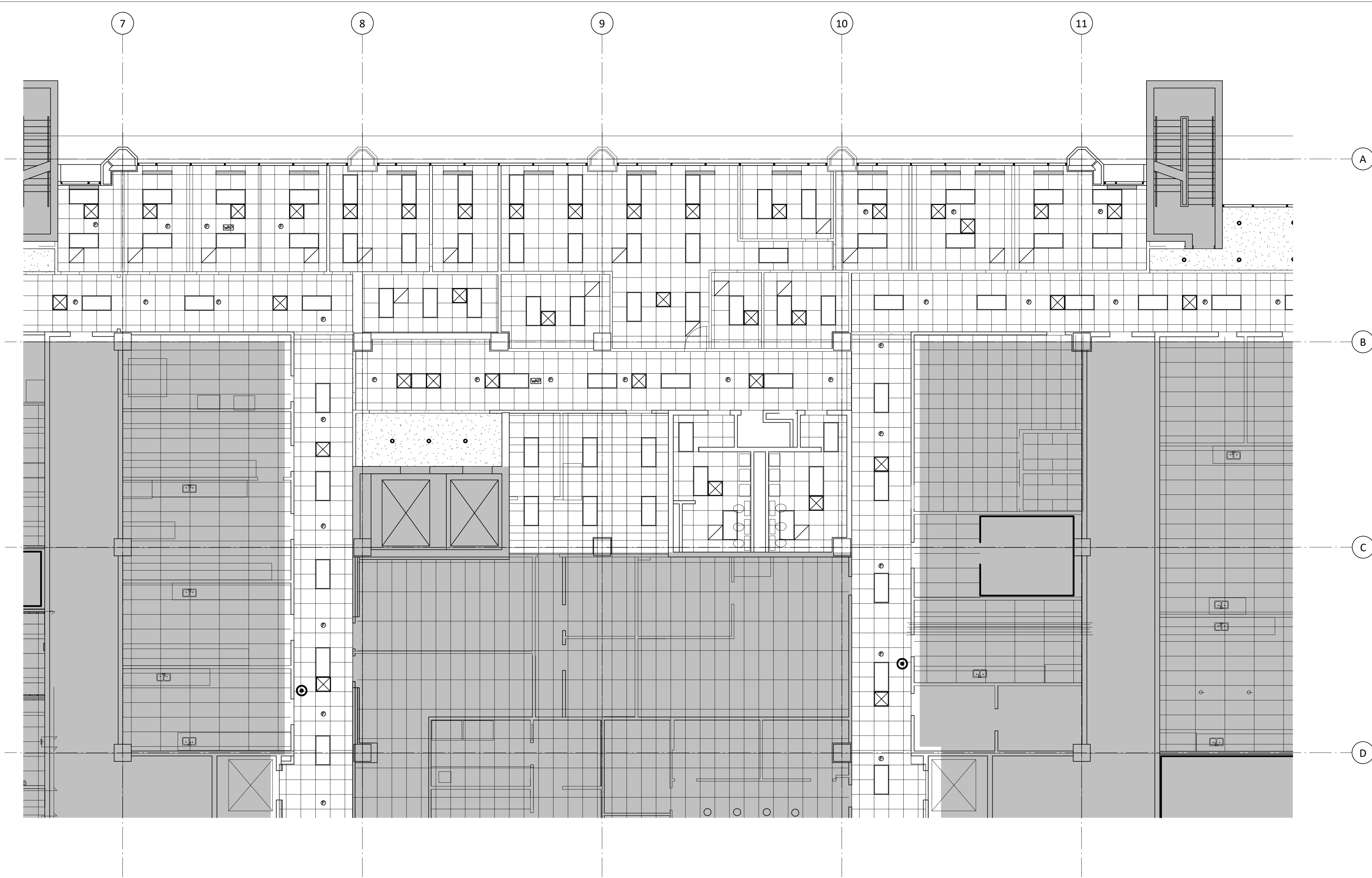
UTHSC
MSB OFFICE AIR DISTRIBUTION-5TH & 7TH FLOORS
 E&C PROJECT # 3300.01

E&C
 Engineers & Consultants Inc.
 TX Firm Registration No: F-003068
 1010 Lamar, Suite 650
 Houston, Texas 77002
 Tel 713/580-8800
 Fax 713/580-8888
 www.eceng.com

Philo Wilke
 Partnership
 11275 S. Sam Houston Parkway W.
 Suite 200
 Houston, Texas 77031
 832.554.1130 phone
 832.554.1131 fax
 www.pwarch.com

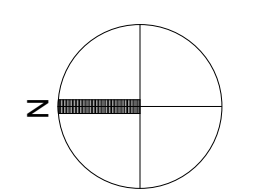
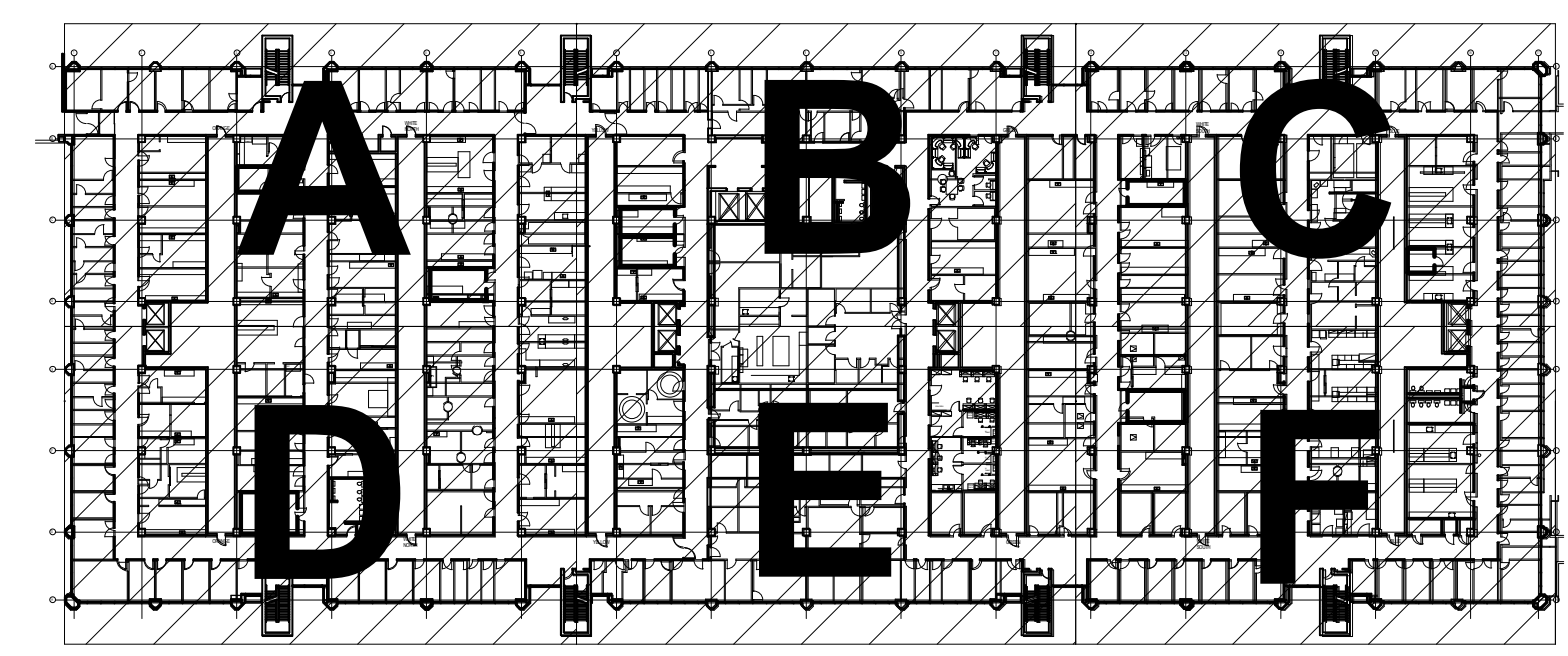


DRAWING: A-164A
REVISION: ADDENDUM #1
 SCALE:
DATE: 04-12-2018



- General Notes - Reflected Ceiling Plan**
- All new ceilings to be 2' x 2' lay-in acoustical ceiling tile at 9'-0" a.f.f., unless noted otherwise. See Finish Schedule for types.
 - Center all down-lights, sprinkler heads, and wall washers in center of ceiling tile, unless noted otherwise.

- Legend - Reflected Ceiling Plan**
- New partition to structure. See 1 A-520 for partition schedule.
 - Existing Ceiling Mounted Fire Alarm Visual Strobe
 - Existing Fire Sprinkler
 - Existing Wireless Access Point
 - Ceiling mounted Exit Sign
 - Existing Ceiling Mounted Emergency Shower Head
 - Not in project Scope
 - Existing to be removed



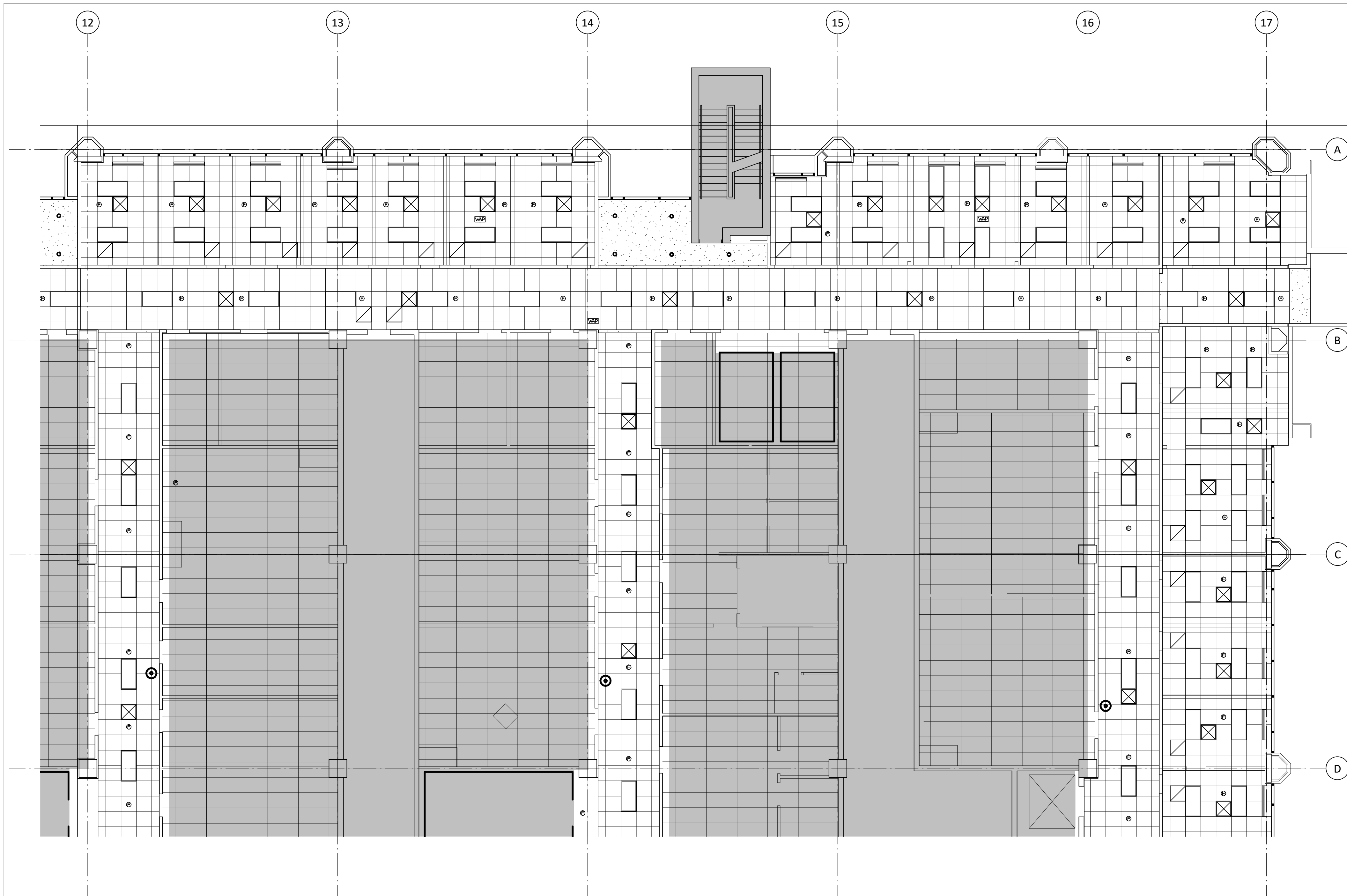
UTHSC
MSB OFFICE AIR DISTRIBUTION-5TH & 7TH FLOORS
 E&C PROJECT # 3300.01

E&C
 Engineers & Consultants Inc.
 TX Firm Registration No: F-003068
 1010 Lamar, Suite 650
 Houston, Texas 77002
 Tel 713/580-8800
 Fax 713/580-8888
 www.eceng.com

Philo Wilke
 Partnership
 11275 S. Sam Houston Parkway W.
 Suite 200
 Houston, Texas 77031
 832.554.1130 phone
 832.554.1131 fax
 www.pwarch.com



DRAWING: A-164B
REVISION: ADDENDUM #1
SCALE:
DATE: 04-12-2018

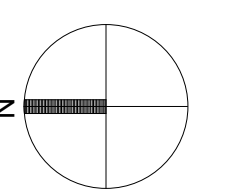
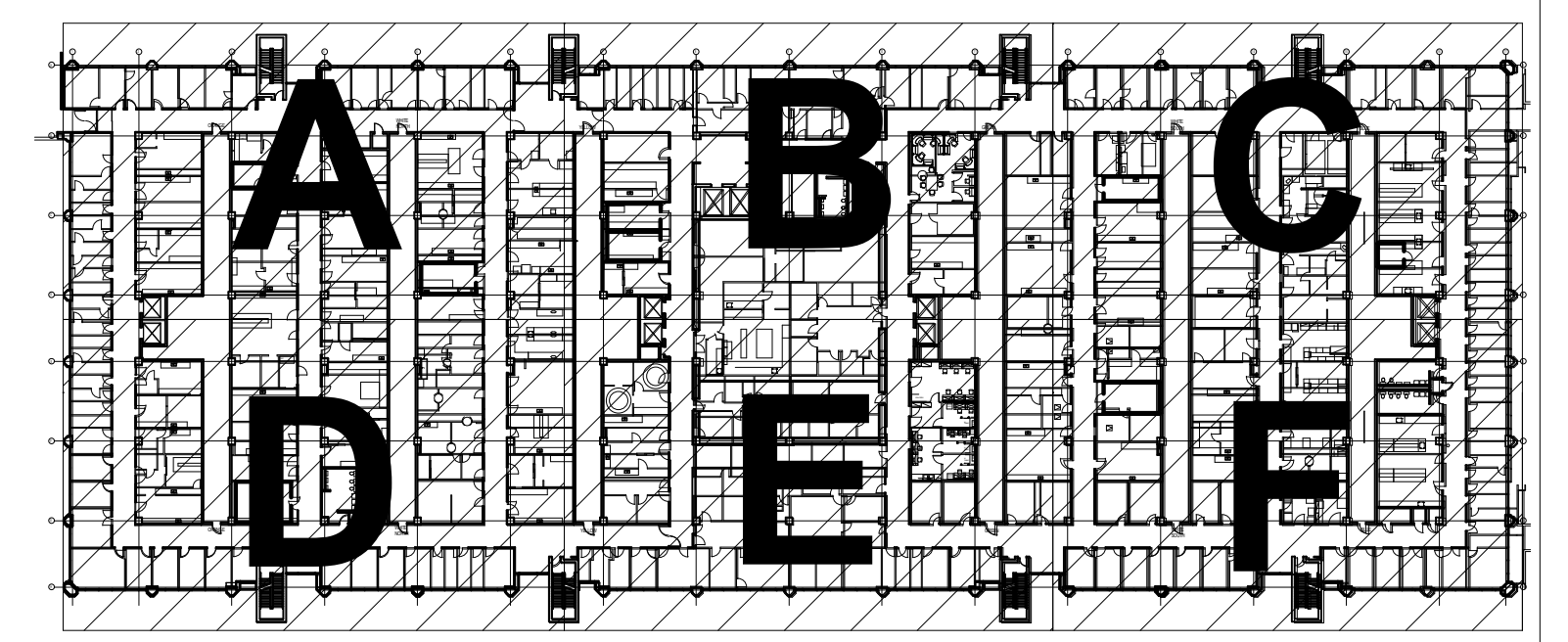


General Notes - Reflected Ceiling Plan

1. All new ceilings to be 2' x 2' lay-in acoustical ceiling tile at 9'-0" a.f.f., unless noted otherwise. See Finish Schedule for types.
2. Center all down-lights, sprinkler heads, and wall washers in center of ceiling tile, unless noted otherwise.

Legend - Reflected Ceiling Plan

- New partition to structure. See 1 A-520 for partition schedule.
- Existing Ceiling Mounted Fire Alarm Visual Strobe
- Existing Fire Sprinkler
- Existing Wireless Access Point
- Ceiling mounted Exit Sign
- Existing Ceiling Mounted Emergency Shower Head
- Not in project Scope
- Existing to be removed



Reflected Ceiling Plan - Level 7 Area C - New

1/8" = 1'-0" 1

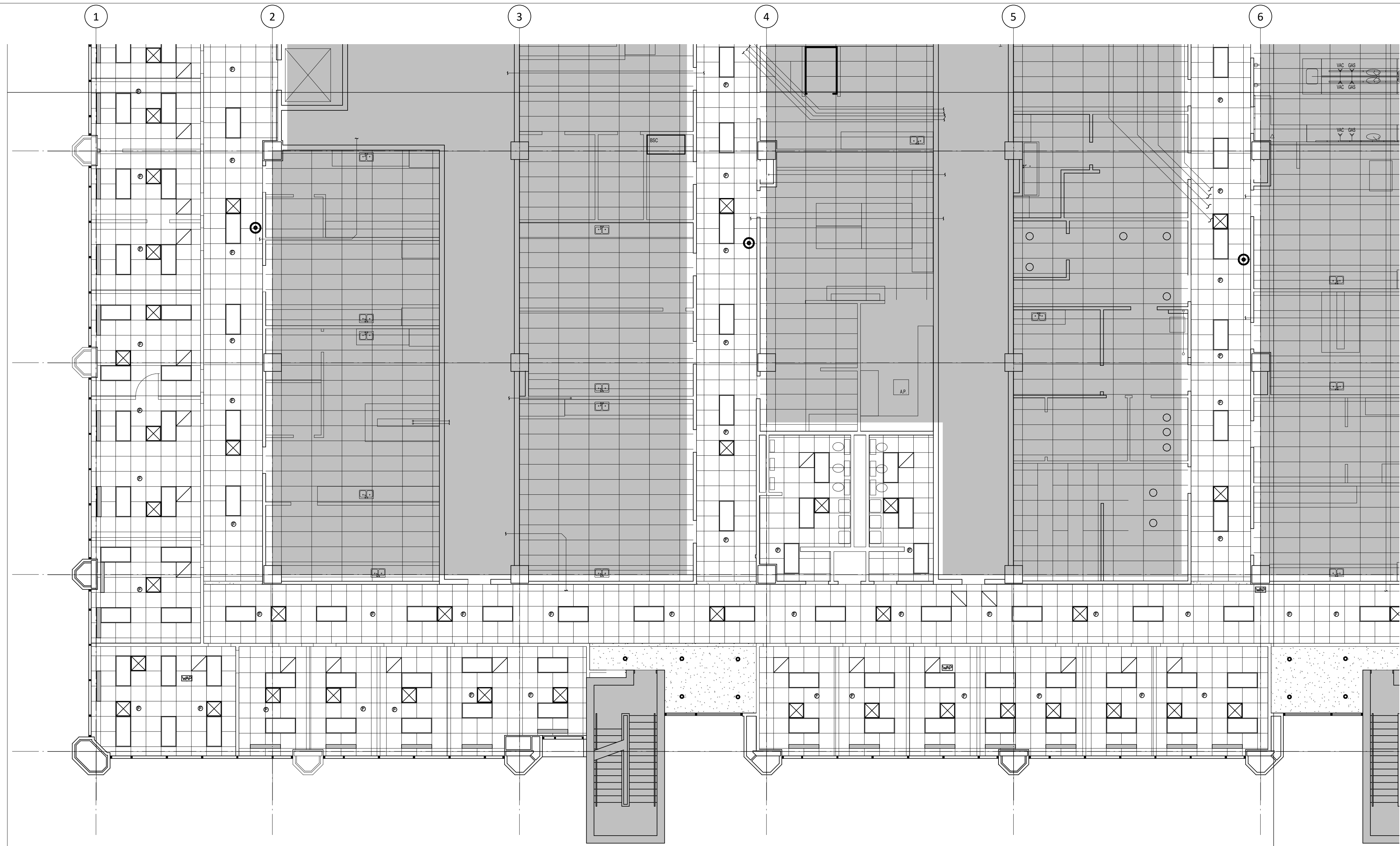
E&C
 Engineers & Consultants Inc.
 TX Firm Registration No: F-003068
 1010 Lamar, Suite 650
 Houston, Texas 77002
 Tel 713/580-8800
 Fax 713/580-8888
 www.eceng.com

Philo Wilke
 Partnership
 11275 S. Sam Houston Parkway W.
 Suite 200
 Houston, Texas 77031
 832.554.1130 phone
 832.554.1131 fax
 www.pwarch.com

UTHSC
MSB OFFICE AIR DISTRIBUTION-5TH & 7TH FLOORS
 E&C PROJECT # 3300.01

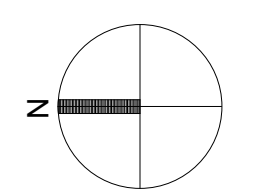
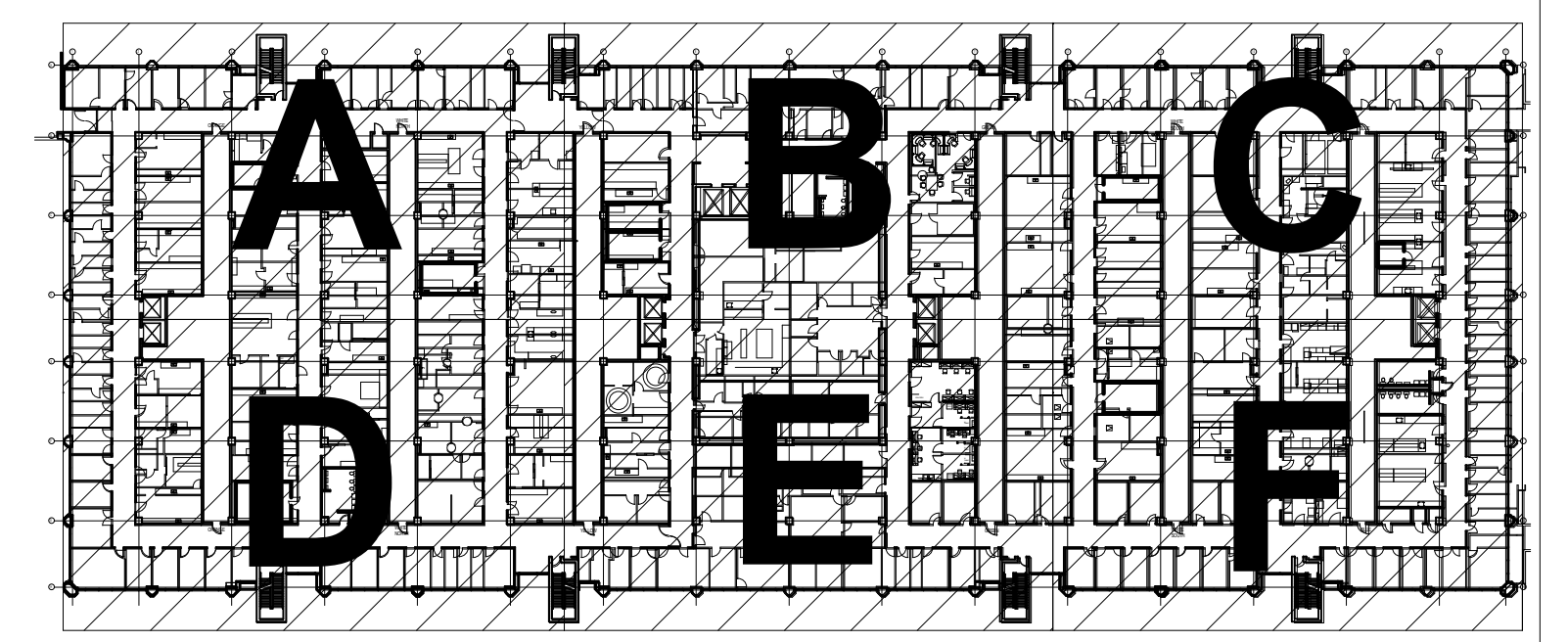


DRAWING: A-164C
REVISION: ADDENDUM #1
SCALE:
DATE: 04-12-2018



- General Notes - Reflected Ceiling Plan**
- All new ceilings to be 2' x 2' lay-in acoustical ceiling tile at 9'-0" a.f.f., unless noted otherwise. See Finish Schedule for types.
 - Center all down-lights, sprinkler heads, and wall washers in center of ceiling tile, unless noted otherwise.

- Legend - Reflected Ceiling Plan**
- New partition to structure. See 1 A-520 for partition schedule.
 - Existing Ceiling Mounted Fire Alarm Visual Strobe
 - Existing Fire Sprinkler
 - Existing Wireless Access Point
 - Ceiling mounted Exit Sign
 - Existing Ceiling Mounted Emergency Shower Head
 - Not in project Scope
 - Existing to be removed



UTHSC
MSB OFFICE AIR DISTRIBUTION-5TH & 7TH FLOORS
 E&C PROJECT # 3300.01

E&C
 Engineers & Consultants Inc.
 TX Firm Registration No: F-003068
 1010 Lamar, Suite 650
 Houston, Texas 77002
 Tel 713/580-8800
 Fax 713/580-8888
 www.eceng.com

Philo Wilke
 Partnership
 11275 S. Sam Houston Parkway W.
 Suite 200
 Houston, Texas 77031
 832.554.1130 phone
 832.554.1131 fax
 www.pwarch.com



DRAWING: A-164D
REVISION: ADDENDUM #1
SCALE:
DATE: 04-12-2018

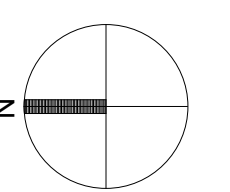
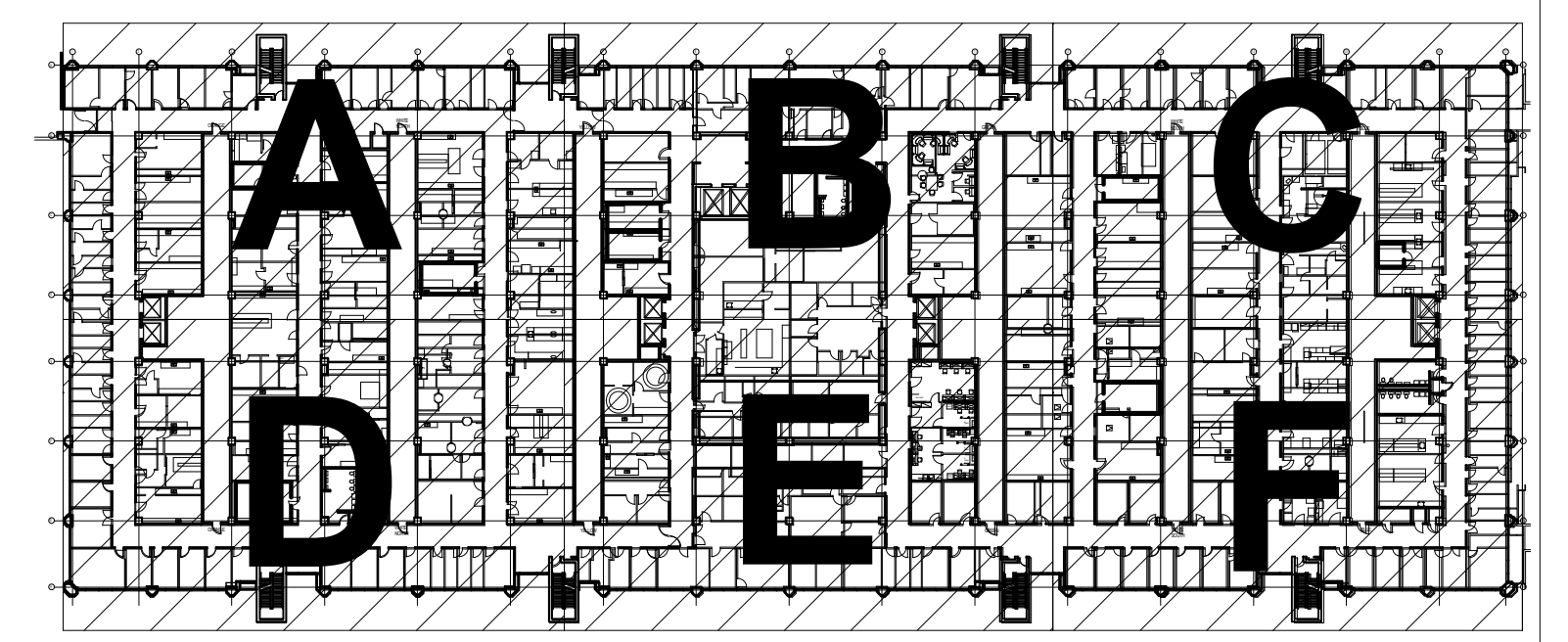


General Notes - Reflected Ceiling Plan

1. All new ceilings to be 2' x 2' lay-in acoustical ceiling tile at 9'-0" a.f.f., unless noted otherwise. See Finish Schedule for types.
2. Center all down-lights, sprinkler heads, and wall washers in center of ceiling tile, unless noted otherwise.

Legend - Reflected Ceiling Plan

- New partition to structure. See 1 A-520 for partition schedule.
- Existing Ceiling Mounted Fire Alarm Visual Strobe
- Existing Fire Sprinkler
- Existing Wireless Access Point
- Ceiling mounted Exit Sign
- Existing Ceiling Mounted Emergency Shower Head
- Not in project Scope
- Existing to be removed



Reflected Ceiling Plans - Level 7 Area E - New

1/8" = 1'-0" 1

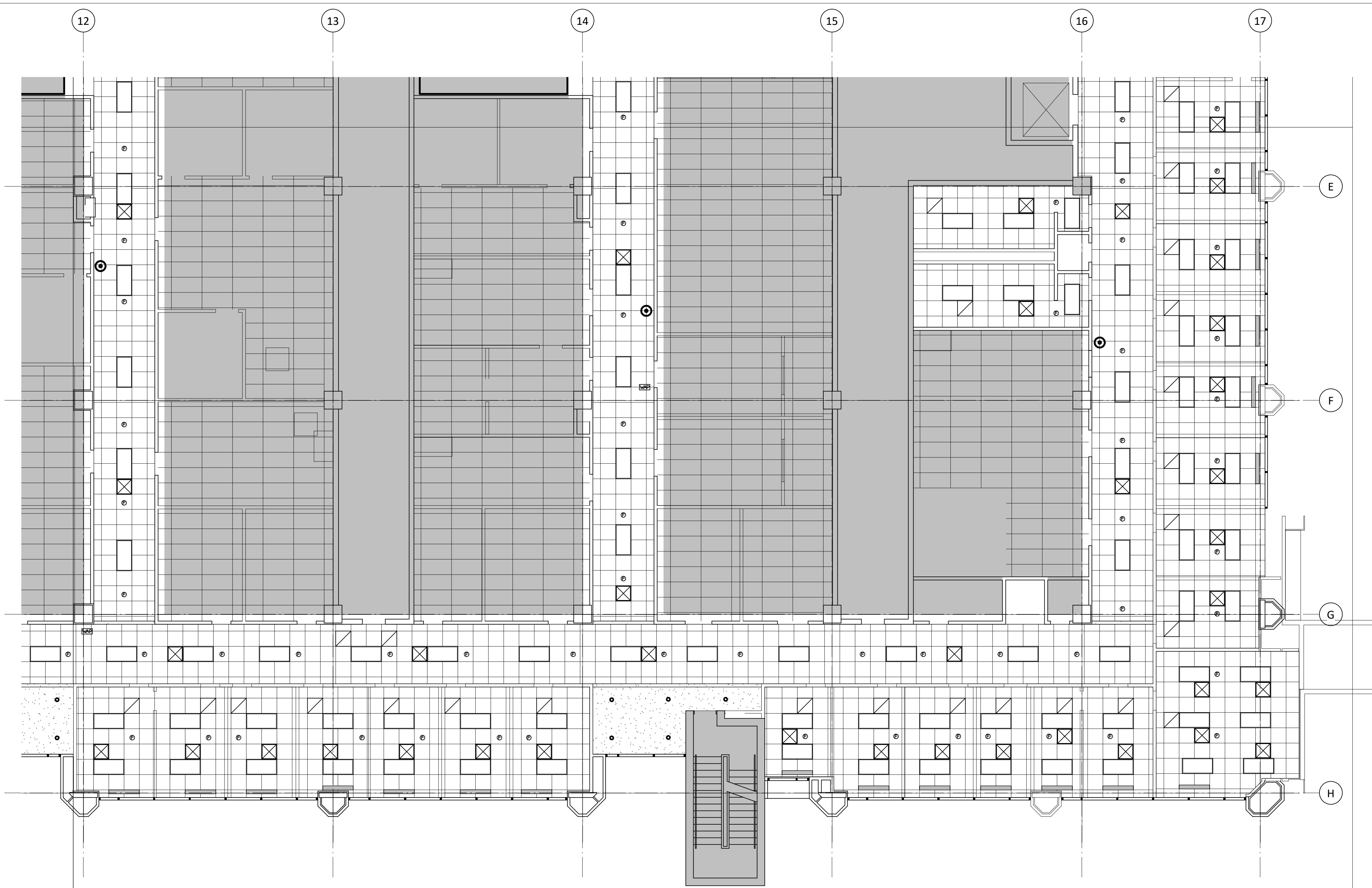
E&C
 Engineers & Consultants Inc.
 TX Firm Registration No: F-003068
 1010 Lamar, Suite 650
 Houston, Texas 77002
 Tel 713/580-8800
 Fax 713/580-8888
 www.eceng.com

Philo Wilke
 Partnership
 11275 S. Sam Houston Parkway W.
 Suite 200
 Houston, Texas 77031
 832.554.1130 phone
 832.554.1131 fax
 www.pwarch.com

UTHSC
MSB OFFICE AIR DISTRIBUTION-5TH & 7TH FLOORS
 E&C PROJECT # 3300.01



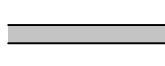
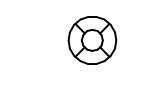






DRAWING: A-164E
REVISION: ADDENDUM #1
SCALE:
DATE: 04-12-2018

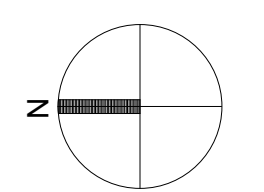
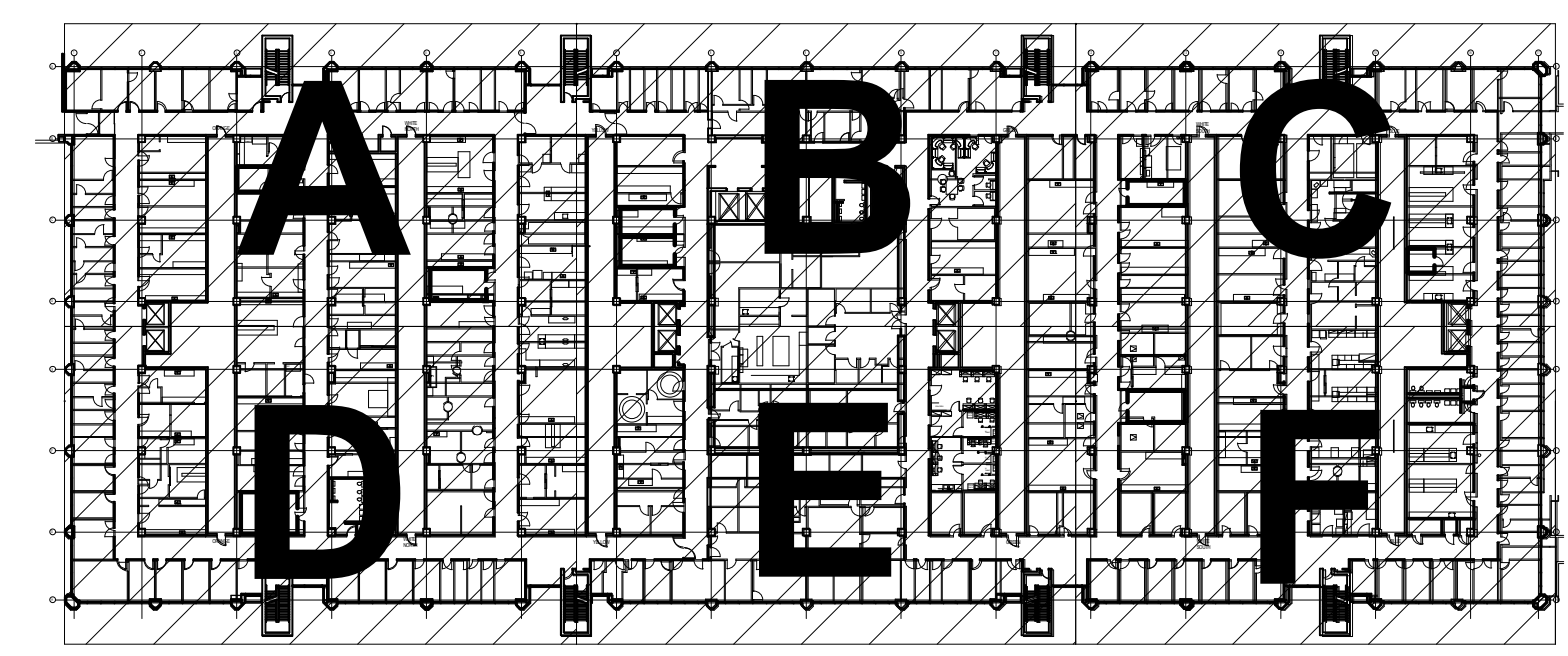


General Notes - Reflected Ceiling Plan

1. All new ceilings to be 2' x 2' lay-in acoustical ceiling tile at 9'-0" a.f.f., unless noted otherwise. See Finish Schedule for types.
2. Center all down-lights, sprinkler heads, and wall washers in center of ceiling tile, unless noted otherwise.

Legend - Reflected Ceiling Plan

-  New partition to structure. See 1 A-520 for partition schedule.
-  Existing Ceiling Mounted Fire Alarm Visual Strobe
-  Existing Fire Sprinkler
-  Existing Wireless Access Point
-  Ceiling mounted Exit Sign
-  Existing Ceiling Mounted Emergency Shower Head
-  Not in project Scope
-  Existing to be removed



UTHSC
MSB OFFICE AIR DISTRIBUTION-5TH & 7TH FLOORS
 E&C PROJECT # 3300.01

E&C
 Engineers & Consultants Inc.
 TX Firm Registration No: F-003068
 1010 Lamar, Suite 650
 Houston, Texas 77002
 Tel 713/580-8800
 Fax 713/580-8888
 www.eceng.com

Philo Wilke
 Partnership
 11275 S. Sam Houston Parkway W.
 Suite 200
 Houston, Texas 77031
 832.554.1130 phone
 832.554.1131 fax
 www.pwarch.com



DRAWING: A-164F
 REVISION: ADDENDUM #1
 SCALE:
 DATE: 04-12-2018